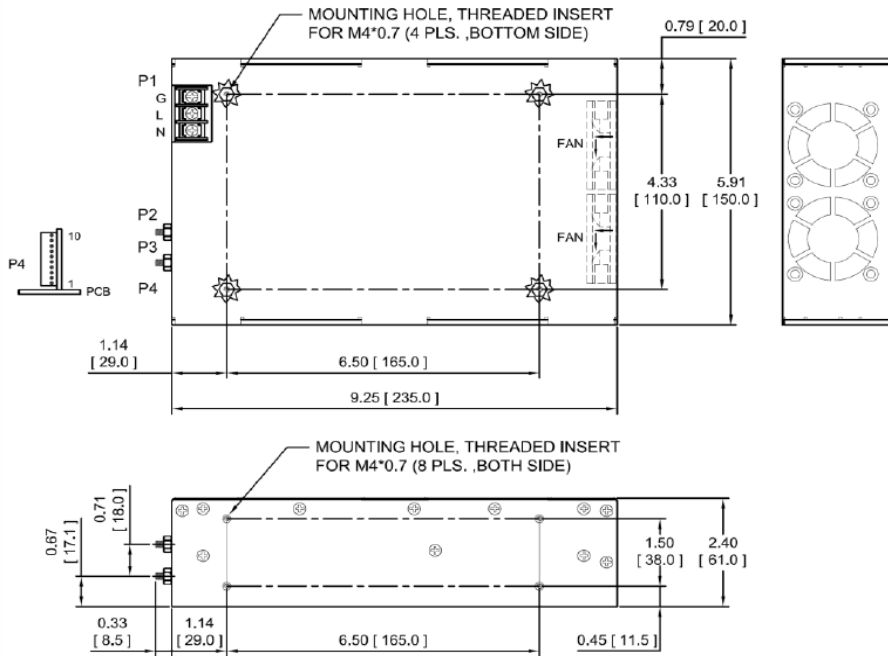




# TM1100 Series

## 1100 Watts AC/DC Medical & ITE Grade Power Supplies

### MECHANICAL SPECIFICATIONS



#### NOTES:

1. Dimensions: inches [mm]
2. Tolerance: 0.02 [0.5] maximum.
3. Input Connector P1: Dinkle terminal P/N DT-4C-B01W-03 with nickel plated M3.5 screws or equivalent.
4. Output Connector P2, P3: M5\*0.8 screw connections.
5. Connector P4: Molex header 22-05-7105 or equivalent, mating with Molex housing 50-37-5103 or equivalent.
6. Weight: 2.89 Kg (6.35 lbs.) approx. for enclosed form.
7. Maximum penetration depth of fixing screws is 4mm from the outer surface of the chassis.

### CONNECTORS & SIGNALS

CONNECTOR	PIN	FUNCTION
P1 (AC)	1	AC LIVE
	2	NEUTRAL
	3	AC GROUND
P2	1	+V
	2	
P3	1	-V
	2	
P4	1	FAN RETURN
	2	+12V FAN
	3	PS OFF
	4	DC OK
	5	+5V STANDBY
	6	INHIBIT
	7	PFD
	8	-V SENSE
	9	+V SENSE
	10	COMMON RETURN

CONTROL SIGNALS	
PFD	TTL high for normal operation, low upon loss of input power, turn-on delay time 100-2500 ms, turn-off delay time 1ms minimum
INHIBIT	TTL low to turn off output
DC OK	TTL high when output voltage >95%
PS OFF	TTL high to turn off output