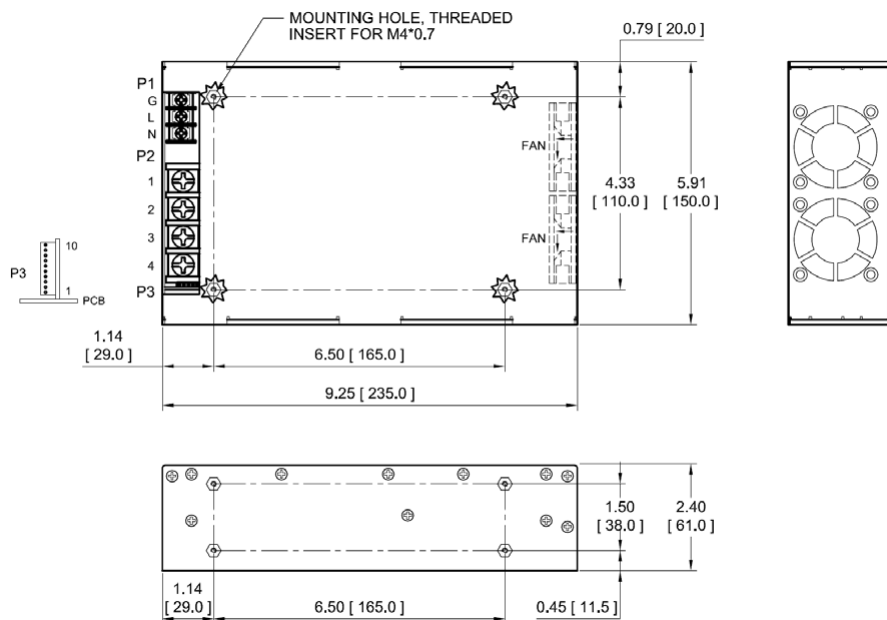


MECHANICAL SPECIFICATIONS



NOTES:

1. Dimensions: inches [mm]
2. Tolerance: 0.02 [0.5] maximum.
3. Input Connector P1: Dinkle terminal P/N DT-4C-B01W-03 with nickel plated M3.5 screws or equivalent.
4. Output Connector P2, P3: M5*0.8 screw connections.
5. Connector P4: Molex header 22-05-7105 or equivalent, mating with Molex housing 50-37-5103 or equivalent.
6. Weight: 2.89 Kg (6.35 lbs.) approx. for enclosed form.
7. Maximum penetration depth of fixing screws is 4mm from the outer surface of the chassis.

CONNECTORS & SIGNALS

| CONNECTOR | PIN | FUNCTION |
|-----------|-----|---------------|
| P1 (AC) | 1 | AC LIVE |
| | 2 | NEUTRAL |
| | 3 | AC GROUND |
| P2 | 1 | +V |
| | 2 | |
| P3 | 1 | +V RETURN |
| | 2 | |
| P4 | 1 | COMMON RETURN |
| | 2 | +V SENSE |
| | 3 | -V SENSE |
| | 4 | PFD |
| | 5 | INHIBIT |
| | 6 | +5V STANDBY |
| | 7 | DC OK |
| | 8 | PS OFF |
| | 9 | +12V FAN |
| | 10 | FAN RETURN |

CONTROL SIGNALS

| CONTROL SIGNALS | |
|-----------------|---|
| PFD | TTL high for normal operation, low upon loss of input power, turn-on delay time 100-2500ms, turn-off delay time 1ms minimum |
| INHIBIT | TTL low to turn off output |
| DC OK | TTL high when output voltage >95% |
| PS OFF | TTL high to turn off output |