



FEATURES

- Complies with Flex ATX & ATX12V Standards
- Meets 1U Height Constraints
- Active PFC Meets EN 61000-3-2
- 80Plus Bronze High Efficiency
- Remote On/Off Control
- High Reliability



INPUT SPECIFICATIONS

Input Voltage Range	90~264 VAC
Input Frequency	47~63Hz
Input Current	4A max. @ 115 VAC, 60Hz 2A max. @ 230 VAC, 50Hz
Inrush Current	50A @ 115 VAC, 80A @ 230 VAC, at 25°C cold start
Earth Leakage Current	154μA Typ. @ 264 VAC, 60Hz

OUTPUT SPECIFICATIONS

Output Power Ratings	See Rating Chart
Load & Line Regulation	See Rating Chart
Ripple & Noise	See Rating Chart
Hold-up Time	17ms min. at full load and nominal input voltage
Over Power Protection	150% max.
Overcurrent Protection	On +3.3V, +5V & +12V
Overvoltage Protection, +3.3V	3.7~4.5V
	+5V 5.7~6.5V
	+12V 13.3~15.5V
Power Turn-on Signal Delay	100~500ms
Power Fail Signal Delay	1ms min.
Temperature Coefficient	0.01%/°C max.

GENERAL SPECIFICATIONS

Efficiency	82% minimum at full load
Withstand Voltage	1,500 VAC, input to ground
Operating Temperature	0°C to +50°C, no derating
Storage Temperature	-20°C to +80°C
Relative Humidity	85% to 95% non-condensing
MTBF	176K hours minimum at full load, 25°C ambient, calculated per MIL-HDBK-217F
Dimensions	81.5*40.5*190 mms

STANDARDS & COMPLIANCES

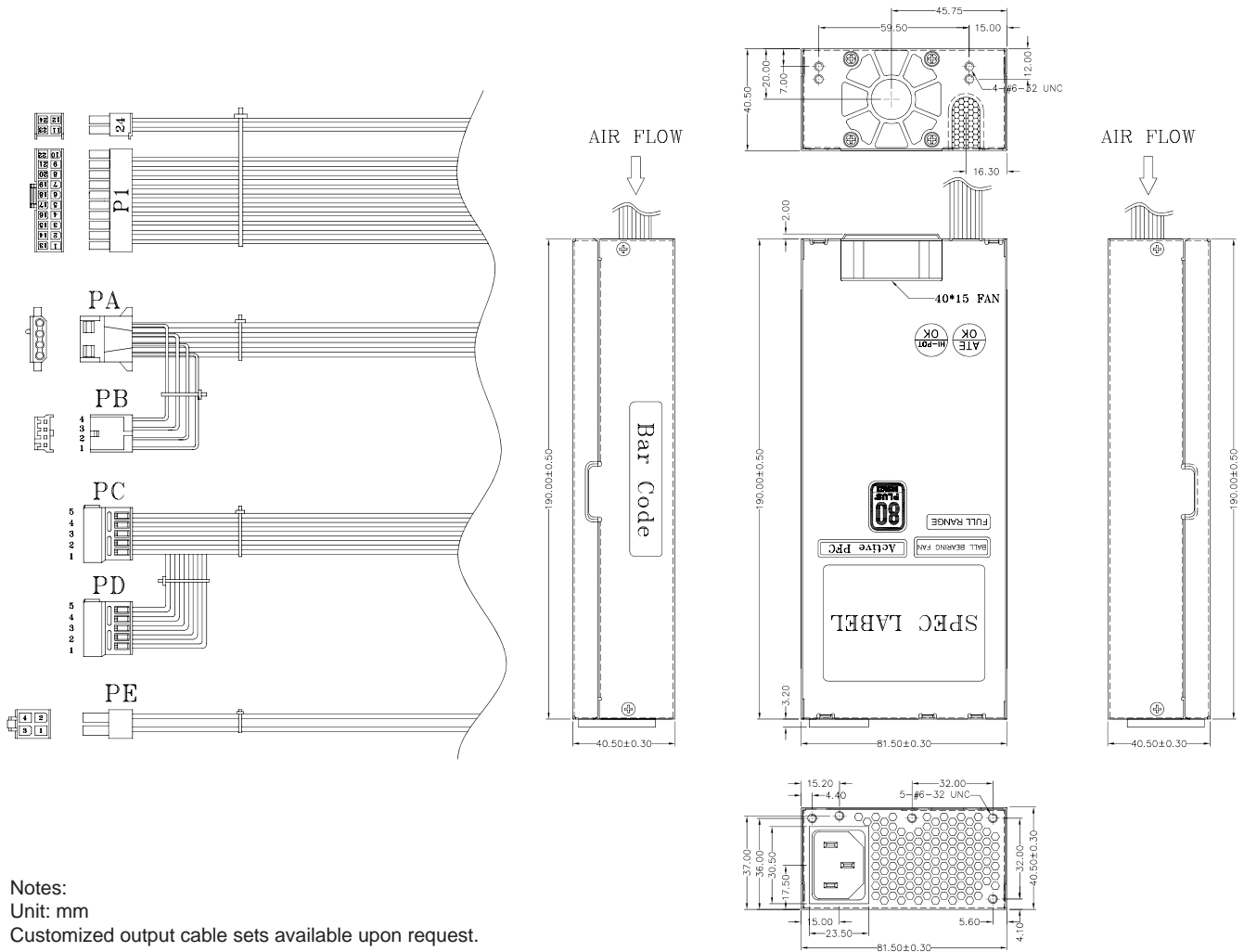
EMC	EN 60601-1-2
Emissions	EN 55011, CISPR 11, FCC Class B conducted & radiated
Immunity	EN 61000-3-2, EN 61000-4-2, EN 61000-4-3, EN 61000-4-5, EN 61000-4-11
Safety Standards	IEC/EN/UL 60601-1, 3rd Edition
Agency Approvals	UL, cUL, TUV, CB, CE
Other Standards	RoHS, EuP

OUTPUT VOLTAGE & CURRENT RATING CHART

Output Voltage	Minimum Load	*Maximum Load	Load Regulation	Line Regulation	Ripple & Noise P-P (Max.)
+3.3V	0.3A	9A	±5%	±1%	50mV
+5V	0.5A	12A	±5%	±1%	50mV
+12V	1A	14A	±5%	±1%	120mV
-12V	0A	0.3A	±10%	±2%	120mV
-5V	0A	0.3A	±10%	±2%	100mV
+5Vsb	0A	2.5A	±5%	±1%	50mV

*Maximum load for +3.3V and +5V is 60W with overall output limited to 220W.
*+3.3V, +5V and +12V will have ±10% regulation with all loads removed.

MECHANICAL SPECIFICATIONS



Notes:
 Unit: mm
 Customized output cable sets available upon request.