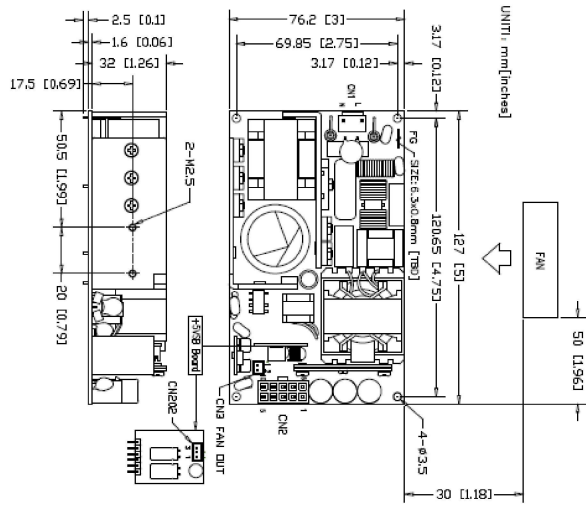


TTM450 Series

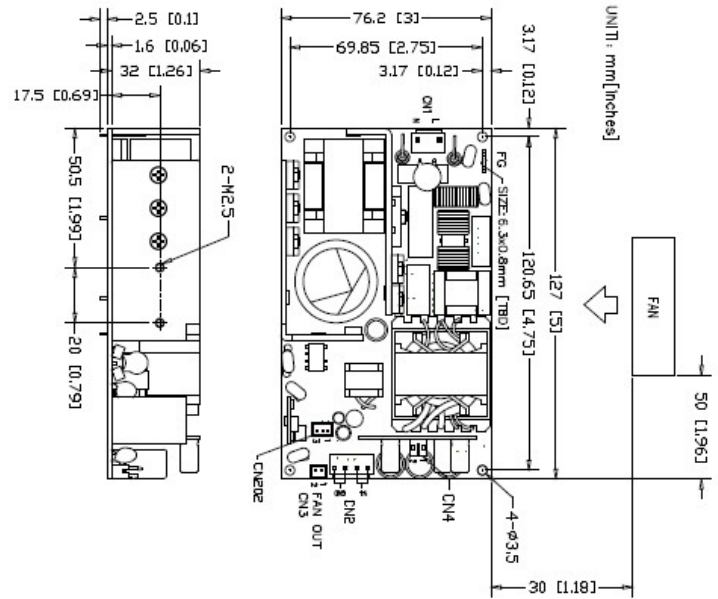
450 Watts AC/DC Medical & ITE Grade Power Supplies

MECHANICAL SPECIFICATIONS

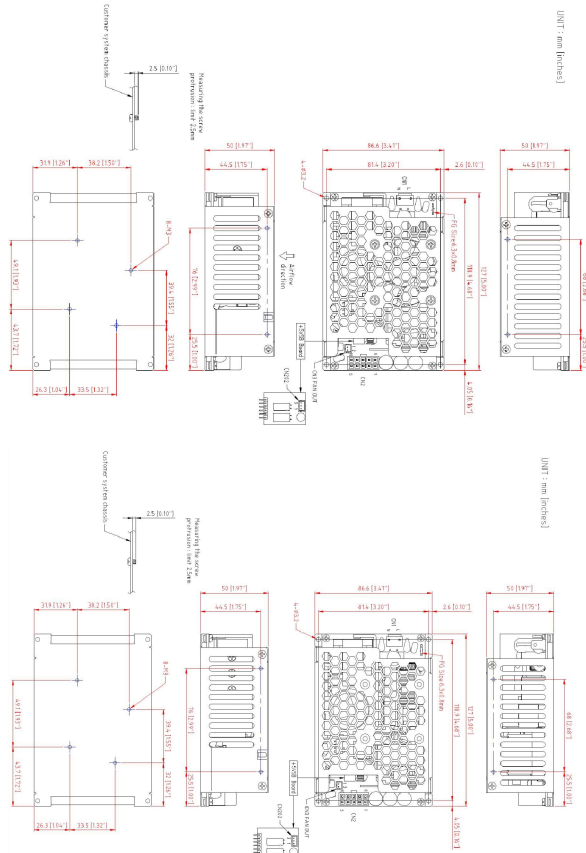
TTM450-12, TTM450-15, TTM450-19, TTM450-24



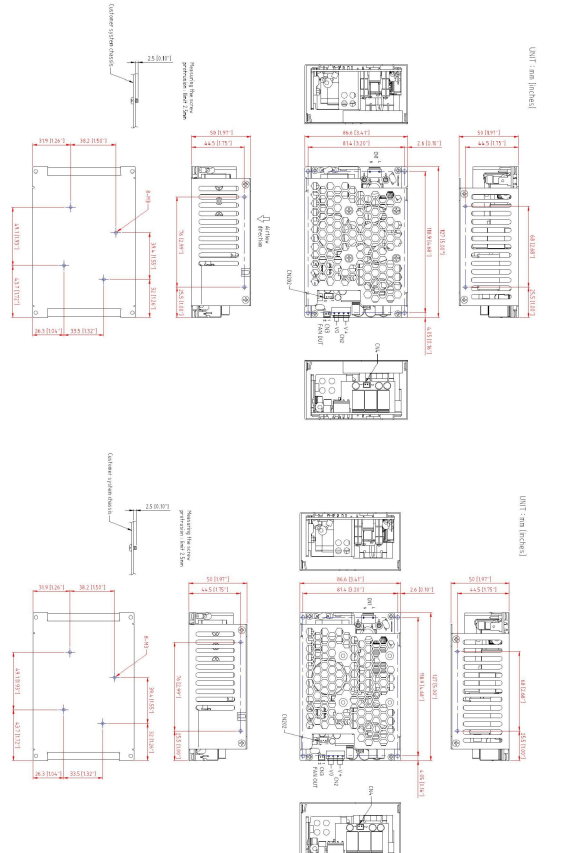
TTM450-36, TTM450-48, TTM450-54



TTM450-xxT, 12-24V Output (Enclosed with top fan)
TTM450-xxC, 12-24V Output (Enclosed without fan)



TTM450-xxT, 36-54V Output (Enclosed with top fan)
TTM450-xxC, 36-54V Output (Enclosed without fan)

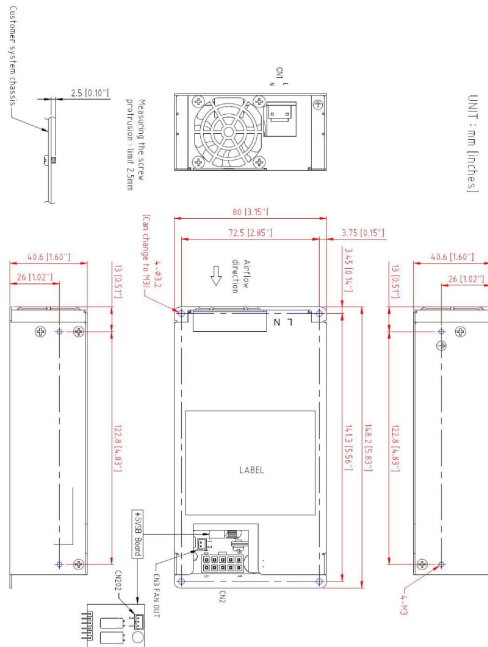


TTM450 Series

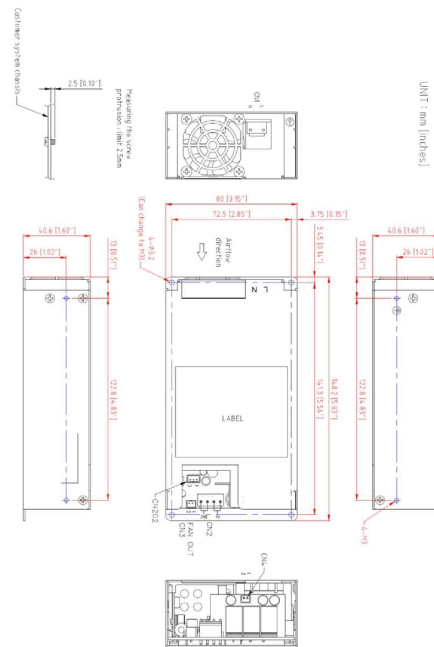
450 Watts AC/DC Medical & ITE Grade Power Supplies

MECHANICAL SPECIFICATIONS (cont.)

TTM450-xxE, 12-24V Output (Enclosed with side fan)



TTM450-xxE, 36-54V Output (Enclosed with side fan)



CONNECTOR	MATING CONNECTOR	PIN	FUNCTION
CN1 2 PIN Wafer 7.92mm Pitch	JST VAR-2	1	LINE
		2	NEUTRAL
CN2 12~24V : 10 Pin Housing 4.2mm Pitch	Molex 39-01-2100	1-3, 6-7	VO+
		4-5, 8-10	DC RTN
CN2 36~54V : 4 Pin Wafer 3.96mm Pitch	JST VHR-4N	1, 2	VO+
		3, 4	DC RTN
CN3 2 Pin Wafer 2.0mm Pitch	JST PHR-2	1	12V FOR FAN
		2	DC RTN
CN4 36~54V : 2 Pin Wafer 2.0mm Pitch	JST PHR-2	1	12V FOR FAN
		2	DC RTN
CN202 for Standby 3 Pin Wafer 2.0mm Pitch	JST PHR-3	1	5V STANDBY
		2	DC RTN
		3	REMOTE ON/OFF

NOTES:

- Dimensions: mm [inches].
- Weight: 390g (open frame), 570g (enclosed, top fan), 660g (enclosed, side fan)